

# Land Rent & Equipment AUCTION

Bethany, Missouri

## TIMED ONLINE FARM RETIREMENT



### Harrison County, MO **TIMED ONLINE** Land Rent Auction

Closes: Tuesday, March 20, 2018 AT 1PM



# 1,588±

**Tillable Acres - 7 Tracts  
IMMEDIATE POSSESSION!**

**Bethany, Missouri**

Located 3 miles southwest of Bethany, MO on Hwy 69. Watch for auction signs.

**Auctioneer's Notes:** After farming for 3 generations, GlennDale and Bryan Cox have made the decision to retire. We are honored to assist them with renting out their family's farm land through this Land Rent Auction. This is a rare opportunity to increase the size of your farming operation by cash renting 1,588 acres of land which is mostly contiguous. We appreciate the trust they have placed in Steffes Group not only to conduct their Land Rent Auction on March 20th but also with selling their full line of farm equipment on March 27th.

#### Selling Cash Rent Contracts for the 2018 Farming Season

##### Tract #1 - 128.77 Acres

FSA information: 128.77 acres tillable  
Located in Section 32 of Bethany Township, Harrison County, Missouri

**Soil Type:** Combination of primarily Lagonda & Zook silty clay loam and Haig & Grundy silt loam.

##### Tract #2 - 234.36 Acres

FSA information: 234.36 acres tillable  
Located in Sections 32 & 33 of Bethany Township, Harrison County, Missouri

**Soil Type:** Primarily Grundy silt loam and Lagonda silty clay loam.

##### Tract #3 - 275.26 Acres

FSA information: 275.26 acres tillable  
Located in Sections 5 & 6 of Cypress Township, Harrison County, Missouri

**Soil Type:** Primarily Nodaway and Shelby loam.

##### Tract #4 - 467.70 Acres

FSA information: 467.70 acres tillable  
Located in Sections 32 & 33 of Bethany Township and Sections 4 & 5 of Cypress Township, Harrison County, Missouri.

**Soil Type:** Combination of primarily Wabash & Zook silty clay loam and Nodaway & Grundy silt loam.

##### Tract #5 - 351.42 Acres

FSA information: 351.42 acres tillable  
Located in Sections 4, 8 & 9 of Cypress Township, Harrison County, Missouri

**Soil Type:** Primarily Wabash silt clay.

##### Tract #6 - 50.77 Acres

FSA information: 50.77 acres tillable  
Located in Sections 8 & 17 of Grant Township, Harrison County, Missouri

**Soil Type:** Primarily Pershing silt loam

##### Tract #7 - 79.68 Acres

FSA information: 79.68 acres tillable  
Located in Section 30 Bethany Township, Harrison County, Missouri

**Soil Type:** Primarily Grundy silt loam & Lagonda silty clay loam.

For complete terms, conditions, and contracts visit [SteffesGroup.com](http://SteffesGroup.com)



Opens: Wed., March 21 AT 1PM | Closes: Tuesday, March 27, 2018 AT 1PM

**Equipment Location:** 18663 West 347th Street, Bethany, MO 64424

**Equipment Preview:** Monday, March 26th from 10am-5pm. Loadout by appointment only.

#### MFWD & 2WD TRACTORS

**2010 Case-IH 335 Magnum**, 1,892 hrs., MFWD, lux. cab, leather, 5 hyd. w/ return flow, 3 pt., Lg. 1000 PTO, diesel, powershift w/ LH reverser, 10 front weights, diesel, powershift w/ LH reverser, suspended front axle, Cat 4 hammer strap, (2) 1000# rear wheel weight, front fenders, block heater, pre-def, (2) beacon lights, power mirrors, guidance ready, foot throttle, 480/80R50 rear duals, 380/80R38 front duals S/N ZARZ03382

**2012 Case-IH 260 Magnum**, 762 hrs., MFWD, 19 spd. powershift, lux. cab, red leather, 4 hyd., w/ return flow, 3 pt., Lg. 1000 PTO, diesel, LH reverser, cat 3 hammer strap, power mirrors, Blue Def guidance ready, diff. lock, (2) beacon lights, front fenders, (10) front weights, (4) 500# wheel weights, 480/80R46 rear duals, 380/85R34 fronts, S/N ZCRD07030

**1996 John Deere 7800**, 5,231 hrs., MFWD, standard cab, 4 hyd., 3 pt., 540/1000 PTO, diesel, 16 speed, power quad, block heater, front fenders, (2) 450# rear weights, joystick control, diff. lock, JD universal auto track steering, sells with 740 96" bucket self leveling loader 18.4-42 clamp on rear duals, 308/85R30 fronts, S/N RW7800H015030

**John Deere 730**, diesel, NF, power steering, 15.5-38 rears, 6.00-16 fronts S/N 7321743

**(14) John Deere**, suitcase weights and brackets, 103 lbs., fits JD 7800

#### COMBINE

**2009 Case-IH 7120**, AFS 1,420 sep., 1,968 eng., PRVWD, Field Tracker, single pt., manual hopper ext., rear camera system, power mirrors, guidance ready, AFS Pro 600 display, integrated auto steer, variable speed feeder house, chopper, variable speed spreader w/ directional control, rear hitch, beacon light, 620/70R42 front duals, 28L-26 rears, S/N Y9G207087 ext. wear package, (new upgrades fall 2017)

Concaves for 7120 round bar

#### HEADS & HEAD CARTS

**2009 Case-IH 2162**, flex draper head, hyd. fore/aft, 35', single point hook-ups, S/N Y9ZN22523

**2011 Case-IH 3408**, com head, 8x30", single point hook-ups, head height, hyd. deck plates, knife rolls, poly, (4) stock stoppers, lights, S/N VBS022278

**Horst**, head cart 35', 4 wheel steer, 4 wheel brakes, fenders, lights, front & rear suspension, ST225/75D75 tires, S/N 093266

**J&M**, head cart 20', ST215/75014 tires, S/N 11136

#### SPRAYER

**2014 John Deere R4038**, 493 hrs., self-propelled sprayer, 100' boom, 1000 gallon, SS tank, 4x4, rinse tank, chemical induct, 5 body nozzles, foam marker, air ride suspension, stainless plumbing, fenders, hyd. raise step, 380/90R46 tires, S/N 1N04038RKE0006673

**(4) Firestone**, 650/65R38 tires on wheels fits JD sprayer  
**John Deere**, fender kit for 650/65R38 tires (new)

#### PLANTERS

**2014 John Deere 1790 CCS**, planter, 12/23, 2 pt., front fold, vacuum, ground driven, bi-fold markers, pneumatic down pressure, Yetter pneumatic down pressure shark tooth trash wheels, rubber closing wheels, row shut offs, on board hyd. air compressor, chain drags behind wheels, S/N 1A01790ELEA755246 (3 years old/ no use 1st year, less than 1,000 acres)

**2013 Case-IH 1250 Early Riser CCS**, planter, 16x30", 2 pt., front fold, vacuum, hyd. drive PTO mounted pump, Yetter pneumatic down pressure shark tooth trash wheels, Tru Count row clutches, liquid in-furrow, Reball flow indicators, 500 gal. tank, seed scales, markers, S/N YCS028887

**John Deere 7000**, planter, 8x36" front fold, draw bar mount, Yetter hyd. Markers, (new disc openers, bearings, scrapers, and trash wheels)

#### SEMI TRUCKS & TRAILERS

**2005 IHC 9200i**, 470,898 miles, tandem axle duals, ISM Cummins, day cab, 10 speed Eaton Fuller, tilt/telescope, power divide, air ride suspension, air slide 5th wheel, air dump, cruise, power mirrors, power RH window, 11R22.5 fronts, 295/75R22.5 rears, steel wheels, VIN 3HSCEAHR15N003325

**2001 IHC 9100i**, 629,112 miles, tandem axle, Cummins N14 Plus, day cab, 10 speed Eaton Fuller, tilt/telescope, power divide, air slide 5th wheel, power mirrors, cruise control, 167" wheel base, quarter fenders, 315/80R22.5 fronts, 11R22.5 rear duals, steel wheels, VIN 1HSCBAER81J012324

**1974 Chevy C70**, custom deluxe, grain truck, 43,201 miles, 427 V-8 gas, 13 speed, 20' box, dump bed, tandem axle duals, 295/75R22.5 tires

**1970 Chevy C50**, custom, 23,383 miles, 350 V-8 gas, 5x2 transmission, 18' flatbed, hyd dump, HD hoist, single axle + tag axle, 9.00-20 rear duals, 10.00-20 fronts

**1988 Wilson**, grain hopper trailer 43' x 66" x 96", w/ 2 spd. trap doors, std. hoppers, spring ride w/ mini air ride, front & rear ladders, catwalk, 2 spd. landing gear, (4) alums., VIN 1W19AF15952211758

**1982 Hawkeye Eagle 4000**, tandem axle, 40', steel trailer, roll tarp, front & rear ladder & catwalks, spring suspension, 285/75R24.5 tires, (4) alum. wheels, VIN 1T9SH40220Y014618

#### TILLAGE

**2013 Great Plains TurboMax 2400**, vertical tillage, 24', pull type, single point depth control, self-leveling, hyd. angle adjustable disc gangs, lights, rolling harrow, rolling basket, tandem wheels, S/N GP-C1847H

**2012 Case-IH 200 Tiger-Mate**, field cultivator, 36', 9" sweeps, rolling basket, 2 bar spring tine harrow, self-leveling, walking tandems across, gauge wheels, S/N YBD055487

**2011 Case-IH RMX340**, disc, 34', wingfold, gauge wheels, 21.5" blade on 9" spacing, walking tandems, self-leveling, S/N JFH0043462

**Glenco**, 13 shank disc chisel, pull type, (new front blades & new twisted shovels)

**Glenco**, 11 shank disc chisel, pull type, (new front disc blades & twisted shovels)

**2001 Phoenix H-14**, harrow, variable width up to 45', pull type, wingfold

#### CONSTRUCTION

**2013 Ashland I-130xL2**, 13 yd., pull type scraper, hyd. eject, rear push bumper, 18.4-26 rear tires, 21.5-16.1 fronts, S/N 23355

**2013 Ashland I-130xL2**, 13 yd., pull type scraper, hyd. eject, rear push bumper, 18.4-26 rear tires, 21.5-16.1 fronts, S/N 23176

**1975 Gallion 160 Series B**, shows 3,460 hrs., road grader, 855 Cummins, cab, heat, power steering, 14' blade, scarifier, hyd. lift, hyd. tilt, hyd. shift, hyd. angle, 14.00-24 tires, S/N 260BCC02473

#### TRAILER

**2007 Titan**, gooseneck, 29', 24' +5" dove tail, tandem axle duals, lights, brakes, dual landing gear, 20,000# GVWR, chain tray, spring assist fold up ramps, center filler panel, ST235/80R16 tires, VIN 4TGF2920681047823

#### UTV

**2012 Polaris Ranger 800**, EFI, UTV, 4,189 miles, 623 hrs., 4x4, manual dump bed, top, rear window

**2008 Polaris Ranger 700**, EFI, crew, UTV, 2,642 miles, 364 hrs., 4x4, manual dump bed, soft top

#### GRAIN CART

**2003 Kinze 1050**, Harvest Commander grain cart, roll tarp, lg. 1000 PTO, hyd. spout, work light, scales, spout, hopper, and rear cameras, 36" tracks, S/N 505317

#### SILAGE BLOWERS

**Badger 2060**, silage blower, 540 PTO, 60", auger feed, **Badger BN 1040**, silage blower 1000 PTO, 48", auger feed, w/ Grundy Inductor S/N 10076

**Badger BN 1040**, silage blower 1000 PTO, 48", auger feed, S/N 10041

**Knight 3030 Stationary mixer**, 3 phase 15hp motor, scales, SS liner, hay knives

#### TECHNOLOGY

(2) **John Deere 2630**, displays  
(2) **John Deere StarFire 3000**, receivers

(1) **John Deere Universal AutoTrac 200** steering unit  
(3) **Case-IH Pro 700** monitors

(1) **Case-IH 372** receiver with RTK  
(1) **Case-IH 272** receiver w/ row shut off unlocks

(1) **Case-IH**, standard receiver  
(1) **Case-IH**, NAV II, controller

#### ATTACHMENTS

**Land Pride DTM55**, ditch digger, 3 pt., 1000 PTO, hyd. adjust discharge spout, 20" diameter digger, S/N 784519

**Master Manufacturing Bale Master**, bale spear fits John Deere 740 loader

#### GENERATOR, FUEL TANKS, TIRES & MISC.

**Kohler**, portable generator on tandem axle trailer 1,507 hrs., 75 KW, White 6 cyl. diesel, 3 phase, (ag use only)  
(2) 1500 steel horizontal fuel tanks electric dual fuel line gas pump

500 gallon steel horizontal gas barrel  
(8) 23.1-34 duals on rims

Loading chute 15' long, 4' loading height, w/ catwalk, rubber floor



## CLAUDE COX & SONS FARM

GlennDale Cox - 660.425.5569 | Bryan Cox - 660.425.5538

For details contact Terry Hoenig of Steffes Group, 319.385.2000 or by cell 319.470.7120

# SteffesGroup.com

Steffes Group, Inc., 2245 Bluegrass Road, Mt. Pleasant, IA 52641 | 319.385.2000

Licensed to sell in IA, MN, ND, SD, MO, & IL | Any announcements made the day of sale take precedence over advertising





# TIMED ONLINE FARM RETIREMENT



Opens: Wed., March 21 AT 1PM | Closes: Tuesday, March 27, 2018 AT 1PM

Equipment Location: 18663 West 347th Street, Bethany, MO 64424

Equipment Preview: Monday, March 26th from 10am-5pm. Loadout by appointment only.



# SteffesGroup.com



2245 East Bluegrass Road  
Mt. Pleasant, IA 52641  
319-385-2000  
SteffesGroup.com

Please Post

PRESORTED  
FIRST CLASS  
US POSTAGE  
PAID  
Permit #315  
FARGO, ND

**1,588±**  
Tillable Acres - 7 Tracts  
Farm Retirement Equipment



Bethany, Missouri

# Land Rent & Equipment

TIMED ONLINE FARM RETIREMENT

# AUCTION

Bethany, Missouri Closes: March 20th & March 27th



SteffesGroup.com

Steffes Group, Inc., | 319.385.2000

Harrison County, MO **TIMED ONLINE**

# Land Rent Auction

Closes: Tuesday, March 20, 2018 AT 1PM



# 1,588±

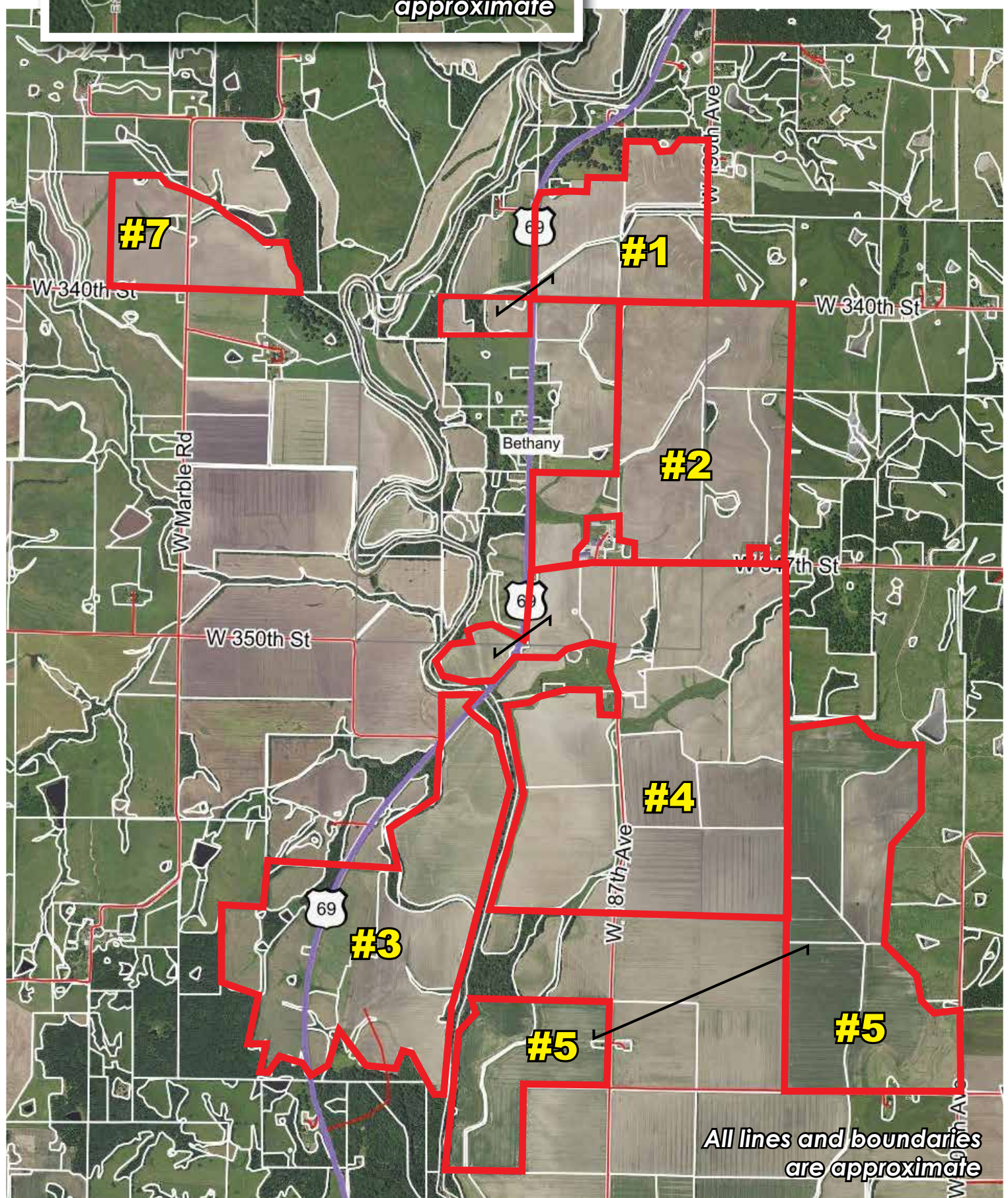
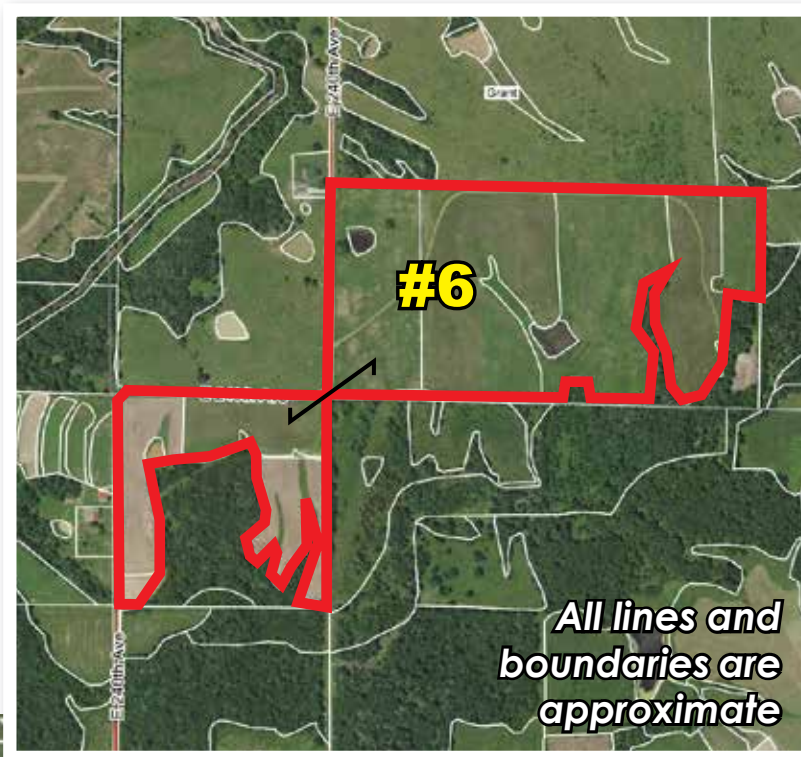
Tillable Acres - 7 Tracts  
IMMEDIATE POSSESSION!

Bethany, Missouri

Located 3 miles southwest of Bethany, MO on Hwy 69. Watch for auction signs.

## Selling Cash Rent Contracts for the 2018 Farming Season

- TRACT #1**  
128.77 ACRES
- TRACT #2**  
234.36 FSA ACRES
- TRACT #3**  
275.26 FSA ACRES
- TRACT #4**  
467.70 FSA ACRES
- TRACT #5**  
351.42 FSA ACRES
- TRACT #6**  
50.77 FSA ACRES
- TRACT #7**  
79.68 FSA ACRES



For complete terms, conditions, and contracts visit SteffesGroup.com